



Policy on Research

Preamble

The Assam Royal Global University, established by an Act of the Legislative Assembly of Assam in 2013, is a premiere private University of the North-East India. The University became functional in the year 2017. As a modern University, the Assam Royal Global University (RGU) is conscious of its roles and responsibilities in the knowledge economy for a sustainable world. The RGU believes in research and innovation that are evidence based, goal oriented and translatable. Research and innovation at RGU are premised on strong ethics and is driven towards sustainable development and environment for the state, the nation, and the world.

Rationale

Universities are the institutions where critical inquiries and investigations are made on questions relating to every sphere of human knowledge. Universities are the drivers of the knowledge-based economy for a sustainable world. The research and Innovation policy of the RGU is premised on this central objective that is at the core of its functioning. Research and innovation aimed at generation of new knowledge for the benefit of the society and for enriching human understanding of the world is the *raison d'etre* of the Assam Royal Global University.

The RGU has the deepest conviction in the infinite creative and imaginative potential of its students and the faculty members. The underpinning philosophy of the RGU policy on Research and Innovation is that of a broad and liberal approach allowing freedom and liberty to the University community for intellectual engagement in any field of inquiry with uncompromising ethics.

Objectives

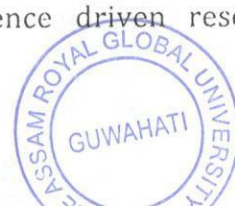
The Research and Innovation policy of RGU is envisaged with the following basic objectives.

- To create a culture of research and innovation with a motivation for harnessing the imaginative and intellectual potential of the students, faculty members and the non-teaching members of the University.
- To actively promote and support research and innovation by the faculty members.
- To promote basic and applied research through multidisciplinary approaches.
- To encourage collaborative research within the University and with external institutions of repute.
- To emphasize on quality and original research work.
- To facilitate goal oriented, contextual and evidence driven research and innovation.

23/12/22
K. Mondal
b2

Handwritten signature

Handwritten signature



- To coordinate and promote research activities in the identified thrust areas of research of the University in alignment with the regional and national research areas of focus.
- To ensure stringent ethical principles in conceptualization, methodology, biosafety, and publication of research work undertaken at the University
- To facilitate student research and innovation amongst the postgraduate and graduate students.
- To encourage women faculty members, students and non-teaching staff in research engagement.
- To attract senior eminent scholars and scientists to the University to facilitate good research work.
- To create state of the art research infrastructure to support research and innovation by the students, faculty members and non-teaching staff.
- To disseminate the knowledge produced through research for the benefit of the society.
- To promote translational research through innovation based on the generated knowledge to address local, regional, and national problems.
- To safeguard the Intellectual Property Rights of the faculty members, students and non-teaching staff for their generated knowledge and innovation.
- To encourage earning funding for extra mural projects from Government and Non-Government research funding agencies.
- To develop and upgrade human resource for enhancing research aptitude and skill through workshops, Faculty Development Programs, and seminars, etc., for the faculty members and non-teaching staff.
- To incentivize research and innovation of the faculty members and students through transparent and objective mechanism.
- To promote generation of revenue through the research generated knowledge through consultancy.

Incentives for promotion of good research

The Assam Royal Global University actively encourages quality research by faculty members and students. Defining quality and determining the yardsticks for objective assessment of the standards of research work is of critical importance. The RGU has a policy of incentivization of good quality research by its faculty members. Towards this, certain quality parameters like publication in peer reviewed indexed journals with cite scores and drawing equivalence of journals in terms of cite scores have been worked out to provide objectivity and precision in assessing.

Definitions:

- **Indexed journals:** An indexed journal means that the journal has gone through and passed a review process of certain requirements done by a journal indexer.
- **Elsevier** is a Netherlands-based publishing company specializing in scientific, technical, and medical content.



- **Scopus** is Elsevier's abstract and citation database launched in 2004. **Scopus index** is used to measure the importance or rank of a journal by calculating the times its articles are cited.
- **Web of Science** is a website that provides subscription-based access to multiple databases that provide comprehensive citation data for many different academic disciplines.
- **SSCI:** The **Social Sciences Citation Index (SSCI)** is a commercial citation index product of Clarivate Analytics. The Social Sciences Citation Index is a multidisciplinary index and indexes over 3,000 social sciences journals from 1985 to present.
- **SCI/SCIE:** The **Science Citation Index (SCI)** is a citation index originally produced by the Institute for Scientific Information (ISI) and created by Eugene Garfield. The larger version (**Science Citation Index Expanded**) covers more than 9,200 notable and significant journals, across 178 disciplines, from 1900 to the present. These are alternatively described as the world's leading journals of science and technology,
- **AHCI:** The **Arts & Humanities Citation Index (A&HCI)**, also known as **Arts & Humanities Search**, is a citation index, with abstracting and indexing for more than 1,700 arts and humanities journals, and coverage of disciplines that includes social and natural science journals. Subjects covered are the Arts, Humanities, Language (including Linguistics), Poetry, Music, Classical works, History, Oriental Studies, Philosophy, Archaeology, Architecture, Religion, Television, Theater, and Radio.

UGC CARE: UGC has established "**Consortium for Academic and Research Ethics**" (CARE) for creation and maintenance of "Reference List of Quality Journals".

- **Cite Score:** The Cite Score of a journal is the number of citations, received in that year and previous 3 years, for documents published in the journal during that period (four years), divided by the total number of published documents.

$$\text{Citescore}_y = \frac{\text{citations}_y + \text{citations}_{y-1} + \text{citations}_{y-2} + \text{citations}_{y-3}}{\text{publications}_y + \text{publications}_{y-1} + \text{publications}_{y-2} + \text{publications}_{y-3}}$$

For example:

Approved
23/12/22
Approved Member
23-12/22

Prof. Saini

[Signature]
23/12/22



$Citescore_{2019}$

$$= \frac{citations_{2019} + citations_{2018} + citations_{2017} + citations_{2016}}{publications_{2019} + publications_{2018} + publications_{2017} + publications_{2016}}$$

Numerator | Citations to articles, reviews, conference papers, book chapters and data papers published in 2016-2019.

Note: The Cite Scores of the list of Journals of various subjects considered showing the three clusters (series) are in the Annexure I where the series 1 represented in the Y axis (indicated by the blue colour) reflects the range of the cite scores of the journals of the subjects and the series 2 (indicated by the brown colour) are indicative of the highest cite scores of the journals of each subject. The Annexure II presents the three series as explained in graphic form.

Denominator | Articles, reviews, conference papers, book chapters and data papers published in 2016-2019

Outlier: The outlier journal is defined based on the percentage of difference between the cite score of the journal listed at the top of the 30 selected journals and the cite score of the journal beyond the listed journals. If the difference is more than 30%, the journal will be counted as an outlier. For example, for the subject of Social Science, 19.1 is the highest cite score amongst the 30 selected journals in the list and the journals beyond these 30 journals in the list with cite scores of 34.4, 68.4 and 125.5 are considered as outliers, because the percentage of differences in the cite scores are more than 30%.

$$\left(\% \text{ of difference} = \frac{34.4 - 19.1}{19.1} \times 100 = 80.1 \right)$$

For objective assessment of the published research work of the faculty members to decide on incentives the following parameters are considered.

- Quality of the research work will be counted only if the Journal is in the UGC CARE/SCOPUS/Web of Science /AHCI/SCIE/SSCI/SCI (**only in case of single author or main author**).
- Papers in conference proceedings shall not be considered.
- A Journal without cite score will be counted as zero cite score. So, research work published in such journals will not be counted.
- The highest cite score will be assumed the same for all sub-domains of a subject. For example, with respect to the subject of Chemistry the same cite score shall be applicable for the sub-domains of Physical Chemistry, Organic Chemistry, and Inorganic Chemistry.
- The highest cite score of the journals for a department will be calculated out of top 30 relevant journals as per the Scopus list excluding the outlier journals.

Signature
23/12/22

Signature
14/12/22

Signature

Signature
23/12/22



- The number of Outlier Journals shall not be more than five (05) out of total 30 top listed journals.

Method

For awarding selection of the good research publications of the faculty members the four bands of the normalised journals shall be the basis. However, this will be done by committees to be constituted for specific domains of research.

In exceptional cases, depending on the nature of the subject of research and its importance, the domain specific committee shall make its own assessment irrespective of status of the journal in terms of the normalization process by proper justification about the concerned work/journal.

Signature of
23/12/22
Signature Member
23/12/22

Signature

Signature
23/12/22



ANNEXURE I

JOURNAL CITE SCORE

| SN | Departments | Bar Diagram representing highest score for each subject/course (Series 0) | Series 1 | Series 2 | Series 3 | Series 4 |
|----|-------------------|--|------------|----------|---------------------|----------|
| | | | CITE SCORE | 75% | Mid points (50%) | 25% |
| 1 | ENGLISH | 3.1 | 3.1 | 2.325 | 1.55 | 0.775 |
| 2 | ARCHITECTURE | 5.8 | 5.8 | 4.35 | 2.9 | 1.45 |
| 3 | NURSING | 6.3 | 6.3 | 4.725 | 3.15 | 1.575 |
| 4 | History | 8.2 | 8.2 | 6.15 | 4.1 | 2.05 |
| 5 | Journalism | 10.2 | 10.2 | 7.65 | 5.1 | 2.55 |
| 6 | COMMERCE | 10.3 | 10.3 | 7.725 | 5.15 | 2.575 |
| 7 | PHYSIOTHERAPY | 10.5 | 10.5 | 7.875 | 5.25 | 2.625 |
| 8 | EVS | 11.3 | 11.3 | 8.475 | 5.65 | 2.825 |
| 9 | ZOOLOGY | 11.7 | 11.7 | 8.775 | 5.85 | 2.925 |
| 10 | GEOGRAPHY | 12.4 | 12.4 | 9.3 | 6.2 | 3.1 |
| 11 | TTM&HM | 12.8 | 12.8 | 9.6 | 6.4 | 3.2 |
| 12 | FINE ARTS | 13.1 | 13.1 | 9.825 | 6.55 | 3.275 |
| 13 | CE | 14.5 | 14.5 | 10.875 | 7.25 | 3.625 |
| 14 | Geology | 15.1 | 15.1 | 11.325 | 7.55 | 3.775 |
| 15 | Sociology | 16 | 16 | 12 | 8 | 4 |
| 16 | Political Science | 16 | 16 | 12 | 8 | 4 |
| 17 | Economics | 16.8 | 16.8 | 12.6 | 8.4 | 4.2 |
| 18 | LAW | 17 | 17 | 12.75 | 8.5 | 4.25 |
| 19 | Social Science | 19.1 | 19.1 | 14.325 | 9.55 | 4.775 |
| 20 | Psychology | 19.4 | 19.4 | 14.55 | 9.7 | 4.85 |
| 21 | ME | 20.5 | 20.5 | 15.375 | 10.25 | 5.125 |
| 22 | MATHEMATICS | 21.7 | 21.7 | 16.275 | 10.85 | 5.425 |
| 23 | BUSINESS | 22.1 | 22.1 | 16.575 | 11.05 | 5.525 |
| 24 | BOTANY | 22.5 | 22.5 | 16.875 | 11.25 | 5.625 |
| 25 | CSE | 23.4 | 23.4 | 17.55 | 11.7 | 5.85 |
| 26 | EE | 23.4 | 23.4 | 17.55 | 11.7 | 5.85 |
| 27 | ECE | 23.4 | 23.4 | 17.55 | 11.7 | 5.85 |
| 28 | PHYSICS | 23.5 | 23.5 | 17.625 | 11.75 | 5.875 |
| 29 | BIOCHEMISTRY | 31.3 | 31.3 | 23.475 | 15.65 | 7.825 |
| 30 | BIOTECHNOLOGY | 31.5 | 31.5 | 23.625 | 15.75 | 7.875 |
| 31 | Pharmacology | 35.5 | 35.5 | 26.625 | 17.75 | 8.875 |
| 32 | MICROBIOLOGY | 36.9 | 36.9 | 27.675 | 18.45 | 9.225 |
| 33 | CHEMISTRY | 41.1 | 41.1 | 30.825 | 20.55 | 10.275 |
| 34 | Fashion Design | not available | | | | |
| 35 | Social work | not available | | | | |

Dawood

11/2/22

Smta Munder

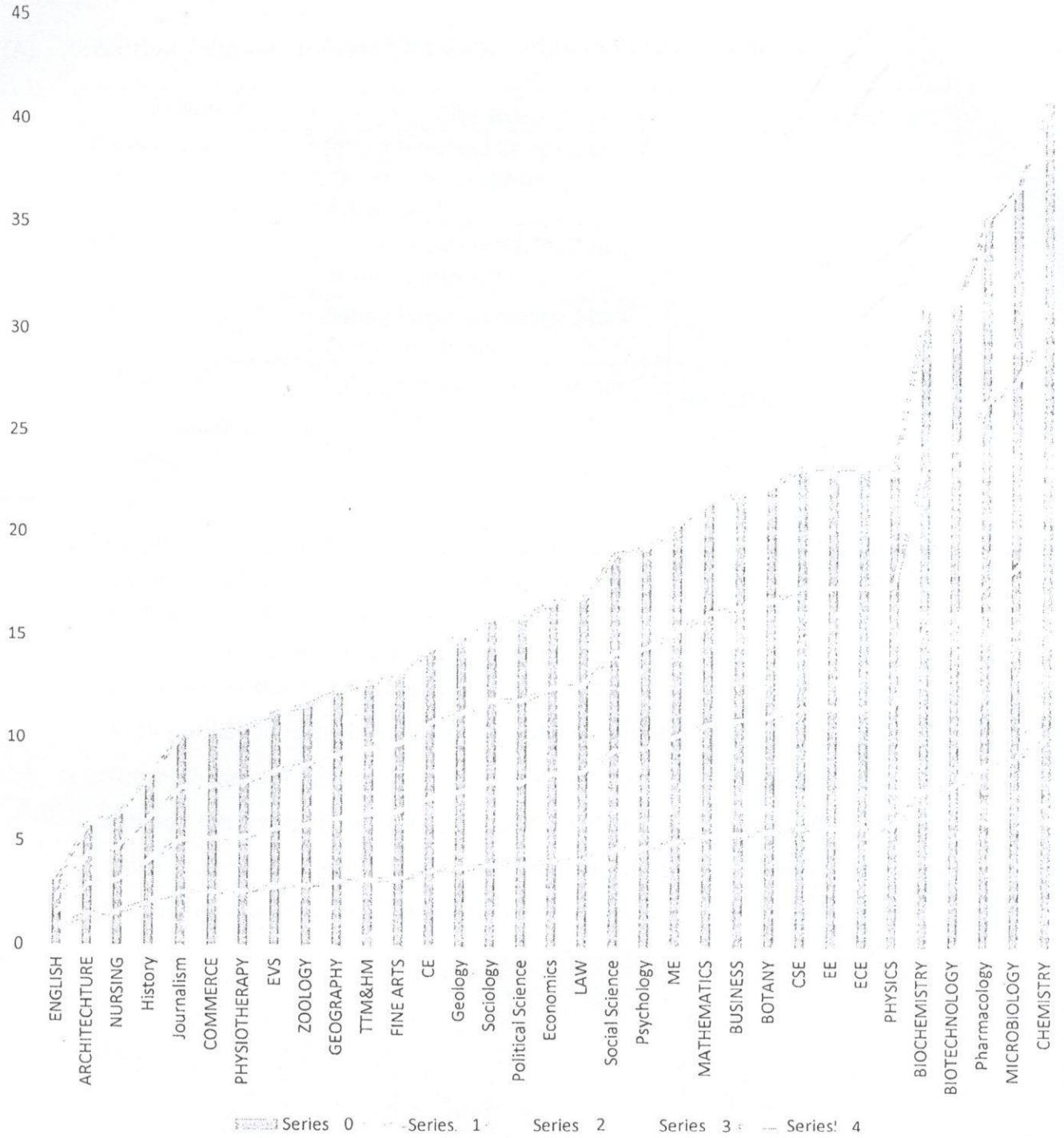
1/2

A. S. Dami



J. H. H. 11/2

EQUIVALENCE GRAPH OF CITE SCORES



Approval
23/12/22
Dr. Jyoti M. Saha
23/12/22

Dr. Jyoti

Dr. Jyoti
23/12/22



Annexure II

(A) Incentive / Financial Award for Publication of Research Papers

| Category | Cite Score | Financial Incentive |
|------------|---|------------------------|
| Category A | falling between Series 1 to 2 / above series 1, as per Annexure I | Rs. 20,000/- per paper |
| Category B | falling between Series 2 to 3 as per Annexure I | Rs. 10,000/- per paper |
| Category C | falling between Series 3 to 4 as per Annexure I | Rs. 7,500/- per paper |
| Category D | falling below Series 4 as per Annexure I | Rs. 5,000/- per paper |

Note: [

- Quality of the research work will be counted only if the Journal is in the UGC CARE/SCOPUS/Web of Science /AHCI/SCIE/SSCI/SCI **(only in case of single author or main author)**.
- Papers in conference proceedings shall not be considered.
- A Journal without cite score will be counted as zero cite score. So, research work published in such journals will not be counted.
- The highest cite score will be assumed the same for all sub-domains of a subject. For example, with respect to the subject of Chemistry the same cite score shall be applicable for the sub-domains of Physical Chemistry, Organic Chemistry, and Inorganic Chemistry.

Agarwal
23/12/22
Angana Mondal
26/12/22

Pratik Jai
26.12.22

Pratik
23/12



Promotion of Student Research

RGU appreciates the innate creative, imaginative, and innovative faculties of the young students. Therefore, the University promotes research activities amongst its students at the Graduate and Post Graduate levels. The following mechanisms are in place to encourage and ensure effective student research activity at RGU.

- Student research at the RGU is carried out in the forms of Project work or Dissertation, Case Studies, etc. These provisions are embedded in the syllabi of the various academic programs of the University.
- Student Project Work, Dissertation, Case Studies are worked out in the respective departments by the faculty members with the guidance of the Deans of the Schools.
- Each student is assigned such work in the stipulated semester (s).
- A faculty member is assigned to every student to extend constant guidance in carrying out the allocated research work by the student.
- Students are also facilitated to present their research work in conferences and seminars within and outside the University.
- There is a strong emphasis on student publication in peer reviewed journals- especially for the post graduate students.
- The RGU has an Institutional Innovation Council (IIC) established under the aegis of the Ministry of Education, Government of India to promote innovation and research and to create an ecosystem of entrepreneurship development. All RGU students are motivated to participate in the activities of the IIC which include Hackathon, Ideation, Model making, software development, etc, under the supervision of faculty members.

This policy will be effective retrospectively from AY 2019-20 onwards (as the incentive policy was approved in the 11th Board of Management meeting, held on 10th May 2019.)

Approved by - Hon'ble Vice-Chancellor and Hon'ble Chancellor

Approved
23/12/22



[Signature]
23/12/2022